



TECH NOTE 3

BACKING UP YOUR SCADA APPLICATION

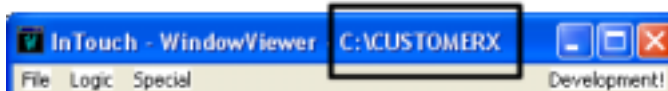
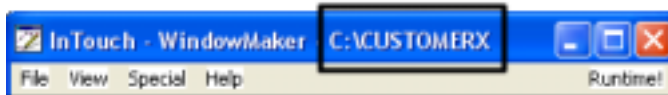
Created: 14 FEB 2005

Updated: 10 MAR 2006

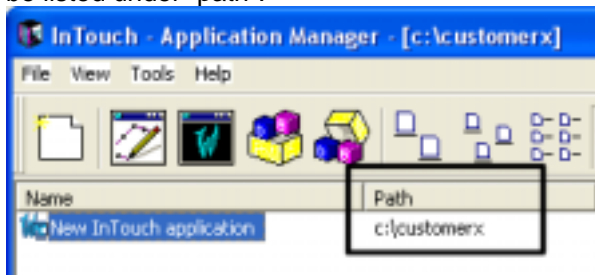
INTOUCH APPLICATION DIRECTORY

All of the InTouch application files needed for a complete backup are located in a single directory. This directory may or may not contain the alarm or history log files.

- The application directory may be displayed on the InTouch Title Bar.



- Regardless of whether your InTouch application directory is located on the Title Bar, shut-down InTouch WindowViewer and InTouch WindowMaker.
- If you were unable to find your application directory, launch the InTouch Application Manager by selecting **Start, All Programs, Wonderware (or Wonderware Factory Suite), InTouch**.
- The highlighted InTouch application should be your InTouch application, the directory will be listed under "path".



MAKING THE INTOUCH APPLICATION BACKUP

- Open **Windows Explorer** by using the **Windows Key** and **E**.
- Browse to **My Documents** and create a directory called **My Backups**.
- Under **My Backups** create another directory in the format of **YEAR.DAY.MONTH** (2006.01.31 for January 31, 2006).
- Right click the **InTouch Application Directory** and select **Copy**.
- Paste the copied directory into the backup folder by right-clicking on the backup folder created above and selecting **Paste**.

DELETING INTOUCH BACKUP FILES

There are several files located in the application directory that can be deleted. Use the **Search** feature in Windows Explorer to find these files and delete them.

- With the backup directory selected, select **Search** from the menu bar
- Select **All Files and Folders** and use ***.?bk** as the filename
- Delete all found files
- Search again using ***.www** and delete the files

DELETING INTOUCH ALARM & HISTORY FILES

To decrease the size of the backup directory, alarm and history files within the directory may be deleted.

- With the backup directory selected, select **Search** from the menu bar and Select **All Files and Folders**
- To delete alarm log files, search for all ***.alg** files and delete
- To delete historical log files, search for ***.lgh** and ***.idx** and delete

WIN911 CONFIGURATION FILE

If you are using **Win911** for alarm notification via a pager, you will also need to copy the **Win911 Configuration File**.

- To locate the path of the **Configuration File**, launch the **Win-911 Configurator** by using **Start, All Programs, Win-911 V7, Win-911 Configurator**.
- If you have an older version of **Win911**, it will be located by using **Start, All Programs, TeleDAV vx.xx, TeleDAC Configurator**.
- Once open, select **File, Open** and note the file and directory.
- Once again, use **Windows Explorer** to browse to the file found about, right-click it and select **Copy**.
- Paste the copied directory into the backup folder by right-clicking on the backup folder created above and selecting **Paste**.

For more information about ITS's services or Motorola MOSCAD product line, please call 847.368.8400 or visit us at <http://www.itsinfo.com/>

Copyright 2005 ITS. All rights reserved.